

# SALUDA

## SOUTH CAROLINA COUNTY PROFILE



### 2017 TEEN BIRTH RATE

**TEEN BIRTH RATE**  
AGES 15-19



2016 Rate = 34

**COUNTY RANKING**



2016 Rank = 16th\*

**DECREASE SINCE 1991**



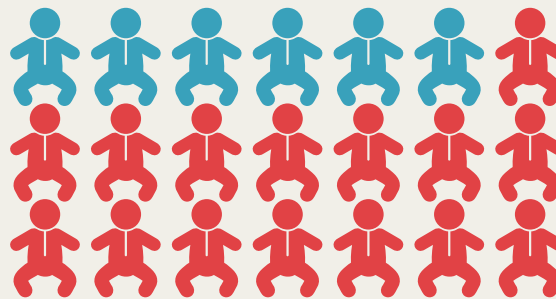
### IN SOUTH CAROLINA

**39%**  
OF HIGH SCHOOL STUDENTS HAVE EVER HAD SEX

**51%**  
OF SEXUALLY ACTIVE HIGH SCHOOL STUDENTS USED A CONDOM AT LAST SEX

### 2017 TEEN BIRTH NUMBERS

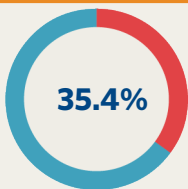
**BIRTHS TO 15-17 YEAR OLDS = 6**  
**BIRTHS TO 18-19 YEAR OLDS = 11**  
**TOTAL BIRTHS 15-19 YEAR OLDS = 17**



Total number of births to South Carolina teens (ages 15-19) = 3,406

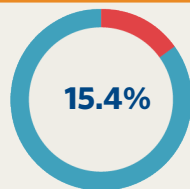
### COMMUNITY WELL-BEING

**Women in Need of Publicly-Funded Family Planning Services**



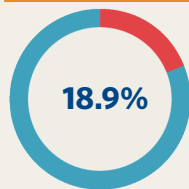
County Rank\* 19

**Teens Not Enrolled in School and Not Working**



County Rank\* 7

**People Living in Poverty**



County Rank\* 27

### SEXUAL HEALTH

**Gonorrhea Ages 15-19**

Cases **3**  
Rate (per 100,000) **269.5**

County Rank\* 44

**Chlamydia Ages 15-19**

Cases **18**  
Rate (per 100,000) **1617.3**

County Rank\* 45

\*Ranking Range = 1 (Worst) - 46 (Best), Data sources available at [TeenPregnancySC.org/county-info](http://TeenPregnancySC.org/county-info).