

ALLENDALE

SOUTH CAROLINA COUNTY PROFILE



2017 TEEN BIRTH RATE

TEEN BIRTH RATE
AGES 15-19



2016 Rate = 56.6

COUNTY RANKING



2016 Rank = 1st*

DECREASE SINCE 1991



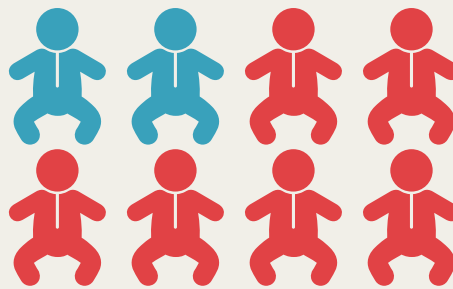
IN SOUTH CAROLINA

39%
OF HIGH SCHOOL STUDENTS HAVE EVER HAD SEX

51%
OF SEXUALLY ACTIVE HIGH SCHOOL STUDENTS USED A CONDOM AT LAST SEX

2017 TEEN BIRTH NUMBERS

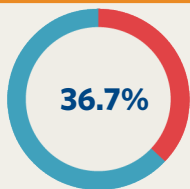
BIRTHS TO 15-17 YEAR OLDS	=	2
BIRTHS TO 18-19 YEAR OLDS	=	6
TOTAL BIRTHS 15-19 YEAR OLDS	=	8



Total number of births to South Carolina teens (ages 15-19) = 3,406

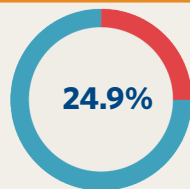
COMMUNITY WELL-BEING

Women in Need of Publicly-Funded Family Planning Services



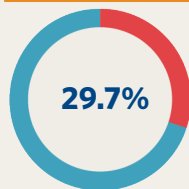
County Rank* 12

Teens Not Enrolled in School and Not Working



County Rank* 1

People Living in Poverty



County Rank* 2

SEXUAL HEALTH

Gonorrhea Ages 15-19

Cases **16**
Rate (per 100,000) **3225.8**

County Rank* 1

Chlamydia Ages 15-19

Cases **52**
Rate (per 100,000)

County Rank* 1

*Ranking Range = 1 (Worst) - 46 (Best), Data sources available at TeenPregnancySC.org/county-info.