

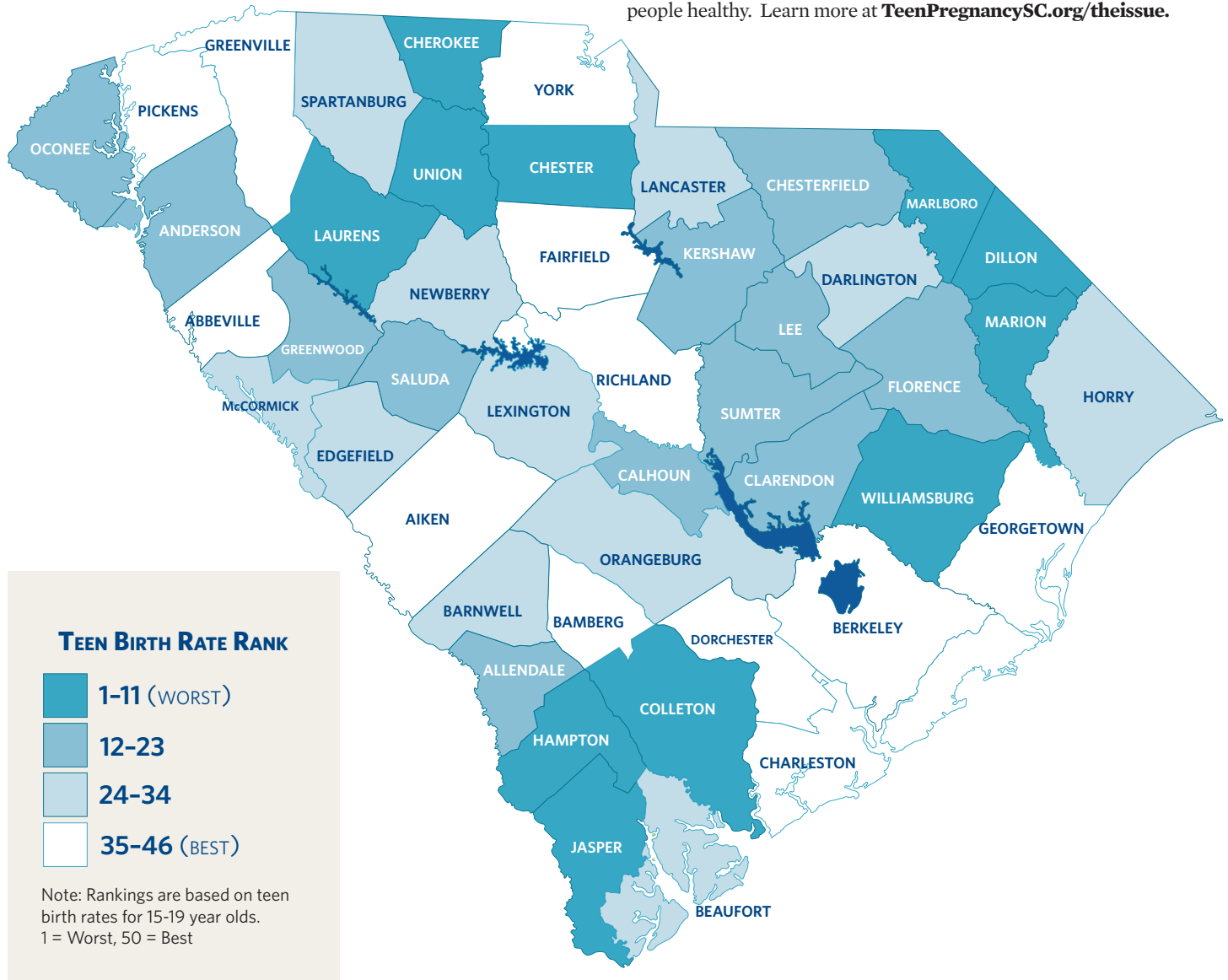
Commitment to Keeping Youth Healthy.



2017 South Carolina Teen Birth Trends

South Carolina's teen birth rate has declined by 70% since peaking in 1991, continuing decades of success for communities across the state. This includes a 9% decrease from 2016 to 2017, landing the teen birth rate for 15-19 year olds at 21.7 per 1,000 females. Declines over the past 25 years have been most substantial among African American youth ages 15-17 whose teen birth rate has decreased by 83% since 1991.

Older youth (18-19 year olds) continue to drive the overall South Carolina teen birth rate, currently making up 75% of all teen births. The South Carolina Campaign to Prevent Teen Pregnancy (SC Campaign) cannot make an impact on teen pregnancy rates without teams of dedicated professionals willing to engage young people across the state. The SC Campaign is committed to supporting professionals and parents, making sure South Carolina's youth get effective health education and increased access to reproductive health services. It takes sustained support and commitment to keep South Carolina's young people healthy. Learn more at TeenPregnancySC.org/theissue.





2017 Teen Birth Rates and Numbers by Age Group

Rank	County	Ages 15-19		Ages 15-17		Ages 18-19	
		Number	Rate	Number	Rate	Number	Rate
1	Jasper	43	57.6	15	33.6	28	93.6
2	Dillon	47	46.8	11	18.2	36	89.8
3	Williamsburg	44	45	14	23.9	30	76.7
4	Laurens	88	42.5	30	24.1	58	69.9
5	Marion	39	41.9	9	16.1	30	80.9
6	Hampton	25	41.3	6	16.6	19	77.9
7	Union	30	40.2	7	15.6	23	77.2
8	Marlboro	29	39.6	6	13.6	23	78.8
9	Chester	34	37.7	13	24	21	58.3
10	Cherokee	73	37.2	21	17.8	52	66.3
11	Colleton	39	34.9	18	26.9	21	47.1
12	Allendale	8	34.5	2	14.4	6	64.5
13	Chesterfield	47	33.9	10	12	37	66.7
14	Oconee	63	32.1	18	15.3	45	57.3
15	Kershaw	64	32	12	10	52	65
16	Lee	16	31.6	3	9.9	13	64.4
17	Saluda	17	31.2	6	18.4	11	50.5
18	Greenwood	77	31.1	18	12.1	59	59.5
19	Sumter	100	30.2	23	11.6	77	58.1
20	Calhoun	12	29	1	4	11	66.3
21	Anderson	177	28	37	9.7	140	55.3
22	Clarendon	26	28	8	14.4	18	48.4
23	Florence	117	26.9	35	13.4	82	47.2
24	McCormick	4	26.7	1	11.1	3	50
25	Darlington	57	25.6	12	9	45	50.4
26	Barnwell	18	25.2	6	14	12	42.1
27	Lancaster	60	25.1	16	11.1	44	46
28	Orangeburg	75	25.1	24	13.4	51	42.6
29	Spartanburg	239	23.5	50	8.2	189	46.5
30	Edgefield	16	23.2	2	4.8	14	50.9
31	Horry	199	22.4	51	9.6	148	41.7
32	Beaufort	107	22.2	29	10	78	40.5
33	Newberry	27	21.1	5	6.5	22	43.1
34	Lexington	176	20.3	41	7.9	135	38.9
35	Aiken	101	20	22	7.3	79	39.1
36	Georgetown	32	20	8	8.4	24	37.6
37	Bamberg	11	19.4	1	2.9	10	44.1
38	Abbeville	16	19.2	3	6	13	39.2
39	Fairfield	12	18.7	1	2.6	11	42.8
40	Dorchester	93	18.1	20	6.5	73	35.6
41	Greenville	278	17.6	71	7.5	207	32.8
42	Pickens	83	15.9	18	5.7	65	31.1
43	Berkeley	97	14.7	19	4.8	78	29.6
44	York	132	14.5	35	6.4	97	26.6
45	Richland	213	13.1	55	5.6	158	24.2
46	Charleston	145	13	49	7.3	96	21.5
	South Carolina	3,406	21.7	862	9.1	2544	40.5

Data Source: Division of Biostatistics, Public Health Statistics and Information Services, SCDHHC, 2017

Note: Counties are ranked from worst to best teen birth rate for 15-19 year olds. Rate is calculated per 1,000 females. Rates calculated with small numbers are unreliable and should be used cautiously.